



3000 TSB FULLY AUTOMATIC P.S. LABELER
 Suitable for Milk and Juice product labeling

Features:

- Applies front and back labels to 1, 2 & 3 liter square containers
- Ideal for soft wall containers
- Label placement of +/- 1.2mm
- Optional cylindrical container application available
- Quick changeovers with calibrated set points
- Twin belt container feed
- Operator interface/touch-screen
- Designed to fit in new or existing line
- Output rate of up to 220bpm
- Ideal for beverage plants

Specifications:

PLC:	As specified by client
Touch-screen:	As specified by client
Power:	220v /Single Phase/ 20amp
Web Speed:	0-30 Linear Meters
Label Drive:	AC Servo closed loop
Positioning:	AC Servo closed loop
Execution:	Left or Right
Frame:	Stainless/Aluminum
Label size:	Vertical axis 160mm Horizontal axis 220mm

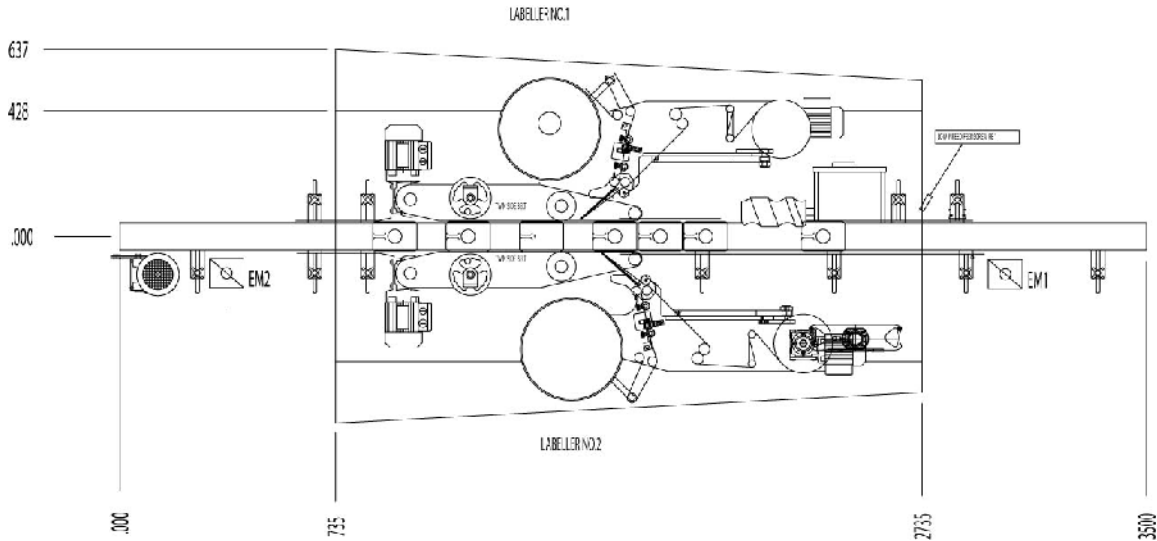
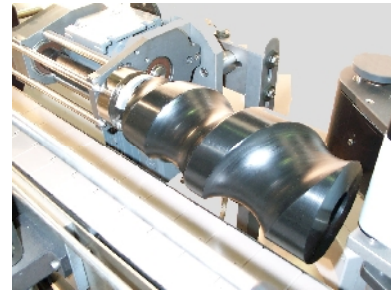


OPERATOR INTERFACE/TOUCH-SCREEN

- Link to PLC
- Available in Different languages
- Located on a Swivel arm for easy access
- Analogue reference to control all AC motors
- Mitsubishi standard or as specified
- Change settings "on-the-fly"
- Package save/re-call

FEEDSCREW ASSEMBLY (for cylindrical containers)

- Positive product separation
- Made for specific container sizes
- Controlled through Operator Interface/Touch-screen
- Colors available for product/tool identification
-



Right execution layout shown. Machine available in left execution also. Customized versions of this machine can be manufactured to specification.



More than 200 Impresstik labelers have been installed into the North American Wine Industry with 50+ installed into mobile bottling lines. All machines are manufactured to the customer's specifications